



SANCTUARY  
RETREATS





SANCTUARY  
RETREATS





|                    |       |       |                             |       |       |
|--------------------|-------|-------|-----------------------------|-------|-------|
| Sanctuary Retreats | ..... | 4-5   | Kenya                       | ..... | 42    |
| Luxury             | ..... | 6-7   | Olonana                     | ..... | 43    |
| Naturally          | ..... | 8-9   | South Africa                | ..... | 44    |
| Wilderness         | ..... | 10-11 | Makanyane Safari Lodge      | ..... | 45    |
| Discovery          | ..... | 12-13 | Tanzania                    | ..... | 46-47 |
| Cultural           | ..... | 14-15 | Serengeti Migration Camp    | ..... | 48    |
| Intimate           | ..... | 16-17 | Kusini                      | ..... | 49    |
| Family             | ..... | 18-19 | Saadani Safari Lodge        | ..... | 50    |
| Bespoke            | ..... | 20-21 | Saadani River Lodge         | ..... | 51    |
| Cruises            | ..... | 22-23 | Swala                       | ..... | 52    |
| China              | ..... | 24    | Ngorongoro Crater Camp      | ..... | 53    |
| Yangzi Explorer    | ..... | 25    | Uganda                      | ..... | 54    |
| Egypt              | ..... | 26-27 | Gorilla Forest Camp         | ..... | 55    |
| Sun Boat III       | ..... | 28    | Zambia                      | ..... | 56    |
| Sun Boat IV        | ..... | 29    | Sussi and Chuma             | ..... | 57    |
| Nile Adventurer    | ..... | 30    | Puku Ridge Camp             | ..... | 58    |
| Zein Nile Chateau  | ..... | 31    | Chichele Presidential Lodge | ..... | 59    |
| Myanmar            | ..... | 32    | Contact Us                  | ..... | 60    |
| Ananda             | ..... | 33    |                             |       |       |
| Lodges & Camps     | ..... | 34-35 |                             |       |       |
| Botswana           | ..... | 36-37 |                             |       |       |
| Baines' Camp       | ..... | 38    |                             |       |       |
| Stanley's Camp     | ..... | 39    |                             |       |       |
| Chief's Camp       | ..... | 40    |                             |       |       |
| Chobe Chilwero     | ..... | 41    |                             |       |       |



Sanctuary Baines' Camp - Botswana

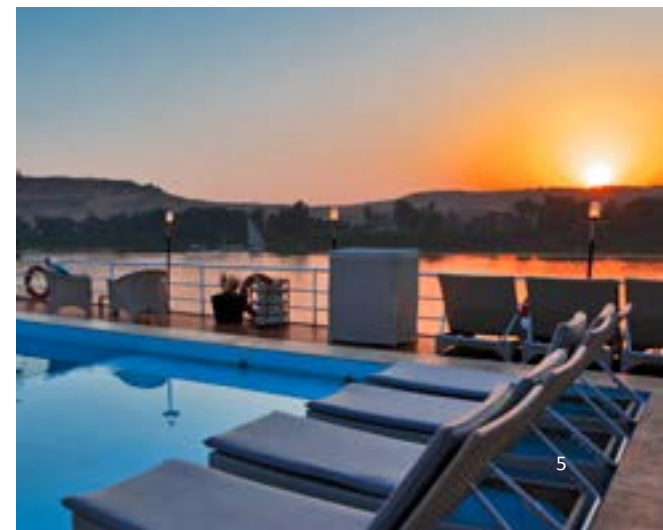


*Sanctuary*

# RETREATS

Welcome to some of the most exclusive travel experiences and destinations in the world.

Sanctuary Retreats was born in Africa with the launch of our first luxury safari camp, Sanctuary Olonana, in Kenya, in 1999. Today, the Sanctuary Retreats portfolio of luxury safari lodges and expedition ships brings a much wider choice of our boutique adventure than ever before – but our standards remain the same. We promise adventure, enchantment and ‘Luxury, naturally’, all delivered with a quiet, understated charm and understanding of place.





# LUXURY

Located in some of the world's most stunning destinations, each Sanctuary is totally individual in its design and operated around the philosophy of 'Luxury, naturally'. All have the same aim: to allow you to have a 'real' experience and enjoy a more natural kind of luxury in properties that have a strong commitment to conservation and responsible tourism.

We create tailor-made, beautifully crafted retreats to give you an entirely unique, luxurious experience. Features include everything from the dedicated service and pampering from our incomparable team, to the chance to indulge yourself in a relaxing bath while stargazing under the African night sky. Enjoy delicious cuisine at private candle-lit dinners, or indulge in a relaxing massage in one of our superb spas.

We never compromise luxury and comfort, and we understand that even when you're in the Serengeti, for example, there are some things that one should never be without. A large, comfortable bed. Exquisite soft-furnishings. The pleasure of a good drink. Excellent food. Immaculate service. Wi-Fi. The company of like-minded people.

All this promises an idyllic, tailor-made experience, or as we put it - 'Luxury, naturally.'







(Top Left) Sanctuary Sun Boat III, Deck - Egypt  
(Middle Left) Sanctuary Chobe Chilwero, Spa - Botswana  
(Bottom Left) Sanctuary Sussi and Chuma - Zambia  
(Right) Sanctuary Baines' Camp, Starbath - Botswana





# NATURALLY

From our beginnings in Kenya, a commitment to conservation and responsible tourism has been an integral part of the construction of our properties as well as our daily operations.

Where possible, we use locally sourced materials and local craftspeople to maintain a sense of authenticity throughout our accommodation.

Sanctuary Retreats Philanthropy builds long lasting relationships with the rural communities in the areas in which we operate. Our goal is to identify and sponsor long-term, viable, and self-sustaining projects that will have the support of both our visitors and our staff. We work closely with the communities to determine their needs and improve their general well being through empowerment, improved infrastructure, skill development and the overall enhancement of health, education and welfare for the future.







# WILDERNESS

RETREATS

Stay among the big game in wilderness reserves. Meet a troop of gorillas in the mists of high mountains. Spend romantic evenings under a canopy of stars. You'll never experience anything quite like the exquisite beauty of the African plains and rainforests anywhere else. Indulge your sense of adventure with Sanctuary Retreats' ultimate luxury safaris. Discover one of our 17 boutique camps and lodges, and find your way back to nature in style.





# DISCOVERY

RETREATS

Unearth some of the world's magnificent wonders. Explore the ancient temples of Myanmar on the Ayeyarwady; uncover Egypt's history; or experience the migrations in the Serengeti and learn the traditions of the Maasai tribe in Kenya.







# CULTURAL

## RETREATS

We are committed to creating boutique experiences with the added promise of authenticity. It's the vast knowledge, energy and passion of our guides that brings the culture and traditions of the local people and the natural beauty of our amazing locations to life. Get a taste of culture with one of our unique dining experiences created by our chefs, such as a picnic in the African wilderness or a candlelit riverbank dinner, all served with a pinch of panache.



Sanctuary Baines' Camp - Botswana



# INTIMATE

---

## RETREATS

---

The ultimate romantic retreat – from relaxing in a star bath or sleeping under the stars in the Okavango Delta, dining under the moonlight in the Masai Mara, to star gazing at Sanctuary Kusini, we offer a variety of ‘under the stars’ experiences at our camps and lodges across Africa.





# FAMILY

---

## RETREATS

---

Our dedicated family adventures are carefully crafted to keep your young explorers entertained. From learning to track animal prints in the African bush to traditional Chinese dumpling making on the Yangtze River, our family programmes are infused with education and culture, creating lifetime memories for all the family.





# BESPOKE

---

## RETREATS

---

As safari and river cruise specialists, we understand that no two 'holiday of a lifetime' requests are the same. We tailor-make our itineraries to suit your individual needs, from selecting which of our lodges would best suit you, to planning travel extensions for after your cruise. And when it comes to special occasions, such as birthday celebrations, weddings and honeymoons, we strive to exceed your expectations.



*Redefining*

# CRUISE

Unlike any other 'cruise' holidays, we employ only the finest floating boutique hotels with a limited number of travellers to create a private, club-like atmosphere. Secluded docks as well as carefully designed itineraries in each location offer you the ultimate in cruising. On board, your expectations will be exceeded, whilst outside, there's a whole new world for you to discover.







*Charming*

# CHINA

Vast, complex and beautiful - a destination for those in search of the exotic and the epic. An experience quite like no other, China must be visited at least once in a lifetime. Travel into the very heart of this amazing land, along the great Yangtze River. Flowing nearly 4,000 miles from Tibet to Shanghai, the Yangtze is the third longest river in the world and the longest river in Asia. Explore the very best stretches of this immense waterway, including the Three Gorges; one of the most celebrated sections of the river.



SANCTUARY  
YANGZI EXPLORER

YANGTZE RIVER



Imperial Suite

The Sanctuary Yangzi Explorer brings new levels of luxury to cruising in China. Carrying 124 passengers at most, our ship offers the finest and most personalised service on the Yangtze. With the highest crew-to-passenger ratio on the river and delicious food, from Chinese and Western traditions, this is the way to explore the Yangtze in style. The Sanctuary Yangzi Explorer offers the largest suites and cabins on the river, all with private balconies.

The cruise itinerary is designed for a relaxed pace, and is tailored to water levels at different times of the year. Unwind on board with Tai Chi, Chinese cookery and calligraphy classes, or simply relax in our full-service spa.

ACCOMMODATION

A total of 62 cabins including 38 deluxe cabins, 20 suites, 4 speciality suites

ITINERARIES

3-night cruise from Chongqing to Yichang,  
4-night cruise from Yichang to Chongqing

HIGHLIGHTS INCLUDE

Local market of Fengdu, villages of the Three Gorges – Qutang, Wu, and Xiling, Three Gorges Dam Project





*Enchanting*

# EGYPT

This great land's ancient past lives on in its majestic monuments and relics created by one of the most impressive civilisations history has seen. This rich history has created a tapestry of cultural and archaeological treasures unmatched anywhere – so much so that the country is home to an estimated third of the world's antiquities. Follow the mighty Nile as it flows through the heart of Egypt – an adventure not to be missed.



# SANCTUARY SUN BOAT III

NILE RIVER



This intimate river yacht represents the ultimate in luxury and relaxation. Evoking the heyday of Egypt's past, the Sanctuary Sun Boat III has several times been voted among the top 100 most beautiful boats in the world by Condé Nast readers. Style, comfort, and elegance are combined throughout to give a natural look. Modelled on the opulent era of the '20s and '30s, this graceful cruiser offers refined living, from delicious gourmet dining in the restaurant to refreshing cocktails around the pool area on the sun deck, or afternoon tea in the stunning lounge.

All cabins feature traditional wooden shutters, allowing you to control the light and ambiance of your room, while the four-poster beds are reminiscent of a time when Nile cruises were home to the rich and famous.

#### ACCOMMODATION

A total of 18 cabins including 2 royal suites and 2 presidential suites

#### ITINERARIES

3-night cruise from Aswan to Luxor, 4-night cruise from Luxor to Aswan

#### HIGHLIGHTS INCLUDE

Valley of the Kings and Queens, the Unfinished Obelisk, Philae, Luxor, Dendera, Kom Ombo and Edfu Temples





Presidential Suite



# SANCTUARY SUN BOAT IV

NILE RIVER



The Sanctuary Sun Boat IV is furnished in a contemporary chic style, with an Art Deco influence. Harmonious colours and teak flooring are used throughout the boat, which, along with modern and eye-catching furniture, makes it a luxurious floating haven. All cabins and suites have stunning river views, and ensuite bathrooms. On the sun deck, teak is set in relief by Egyptian marble around the heated swimming pool creating a classic yet relaxed vibe. The dining room's walls are decorated with hand-painted images depicting everyday life in Nubia, and the luxuriously deep leather chairs perfectly complement the overall Art Deco feel of the boat.

The combination of elegant surrounds, cultural itineraries and experienced egyptologists makes this cruise an unforgettable Nile experience.

#### ACCOMMODATION

A total of 40 cabins including 2 royal suites and 2 presidential suites

#### ITINERARIES

3-night cruise from Answan to Luxor, 4-night cruise from Luxor to Aswan

#### HIGHLIGHTS INCLUDE

Valley of the Kings and Queens, the Unfinished Obelisk, Philae, Luxor, Dendera, Kom Ombo and Edfu Temples



# SANCTUARY NILE ADVENTURER

NILE RIVER



The Sanctuary Nile Adventurer is widely regarded as one of the best boutique ships on the epic Nile, and named as one of National Geographic's 'Journeys of a Lifetime'.

Specially designed itineraries, led by the country's most experienced Egyptologists, cover all the Upper Nile's highlights in small, private groups. The ship's design combines modern styling with authentic Egyptian character. All cabins are spacious, chic, and have stunning river views. The extensive sun deck areas are decked with elegant teak, and have private cabanas around the pool area. The vibrant, contrasting colours of the furniture provide the perfect ambience for lively evenings and afternoon gatherings.

#### ACCOMMODATION

A total of 32 cabins including  
2 presidential suites and 2 deluxe cabins

#### ITINERARIES

3-night cruises from Aswan to Luxor,  
4-night cruise from Luxor to Aswan

#### HIGHLIGHTS INCLUDE

Valley of the Kings and Queens, the Unfinished  
Obelisk, Philae, Luxor, Dendera, Kom Ombo  
and Edfu Temples







Farouk Suite



# SANCTUARY ZEIN NILE CHATEAU

NILE RIVER



Sanctuary Zein Nile Chateau is a stunning dahabiya (traditional Egyptian sailing boat), available only for private charter. Tailor your cruise and each day's sightseeing by choosing from an à la carte style itinerary specially created and led by our renowned Egyptologists. An oasis of calm, the Sanctuary Zein Nile Chateau is reminiscent of the glamour of old-world sailing.

All cabins have been individually designed with spacious bathrooms and Nile views. With a beautiful upper deck, a luxurious Arabian themed sun deck and an opulently styled dining area, this is the epitome of style. What truly sets this sailing boat apart is the design of the on-deck reception areas that are enclosed with sliding glass doors and can be opened to enjoy an indoor and outdoor lounge experience on the Nile. Bask in the beauty of the surrounding views – unchanged for hundreds of years – as you sip on cocktails from the comfort of 'your own' dahabiya. This is what sailing on the Nile was meant to be.

#### ACCOMMODATION

A total of 6 cabins including 2 suites

#### ITINERARIES

Minimum of 4 nights

#### HIGHLIGHTS INCLUDE

Valley of the Kings and Queens, the Unfinished Obelisk, Philae, Luxor, Dendera, Kom Ombo and Edfu Temples



*Mystical*

# MYANMAR

Let us take you in style on voyages of breathtaking beauty and discovery along the mysterious rivers of Myanmar. Cruise the majestic Ayeyarwady between Bhamo and Yangon, visiting temples, pagodas, palaces and monasteries along the way. Journeys on the Chindwin will take you to places visitors rarely see – through the jungles of the North, forgotten villages and ancient towns almost to the Indian border.





# SANCTUARY ANANDA

MYANMAR



Owner's Suite



Sundeck



Welcome aboard the Sanctuary Ananda. Custom-built using traditional Myanmar materials and arranged over four decks, our floating palace combines all the comforts of 5-star contemporary luxury with the refined elegance of authentic Burmese design. The Sanctuary Ananda offers one of the highest staff-to-guest ratios on the river, allowing you to enjoy the mysteries of Myanmar with a choice of six wonderful itineraries led by our expert guides.

Sanctuary Ananda is the only all-balcony, all-suite ship on the Ayeyarwady River, comprising of just 21 beautifully appointed suites, including the prestigious Owner's Suite. Choose to have breakfast and lunch al fresco, whilst dinner is served à la carte in our stylish Talifo Restaurant. To further relax you can choose from our onboard spa, library, gallery, and the all-important lounge, cocktail bar, and plunge pool. Alternatively you can attend a selection of cultural lectures and masterclasses.

#### ACCOMMODATION

A total of 21 suites including 14 deluxe suites, 4 luxury suites and the Owner's Suite

#### ITINERARIES

3-, 4-, and 7-night itineraries on the Upper Ayeyarwady River, 11 nights on the Upper and Lower Ayeyarwady River, and 10 nights on the Chindwin River

#### HIGHLIGHTS INCLUDE

U Bein Bridge, Ananda Temple, Shwezigon Pagoda, Sagaing Hill, Monwya, Mount Popa



*Experience the heart of Africa*

# LODGES & CAMPS

Sanctuary Retreats' lodges and camps are small, exclusive and private properties in landscapes of breathtaking beauty, blended sustainably into their environment. Every trip can be tailored to your own requirements – from game drives to walking safaris, to meals. Our guides know these parts like the back of their hand. Choose between the big-game territories of Kenya's Masai Mara or Tanzania, centre stage for the annual wildebeest migration. Then there are the gorilla-filled mountains of Uganda, the water-drenched wilderness of Botswana, home to elephants and hippos galore, or Zambia, dominated by the mighty Zambezi River and Victoria Falls. Alternatively you might visit our newest destination, South Africa's malaria-free Madikwe Game Reserve, where you'll have the chance to catch a glimpse of the Big 5, the rare African wild dog, as well as a host of other game species.







*Breath-taking*

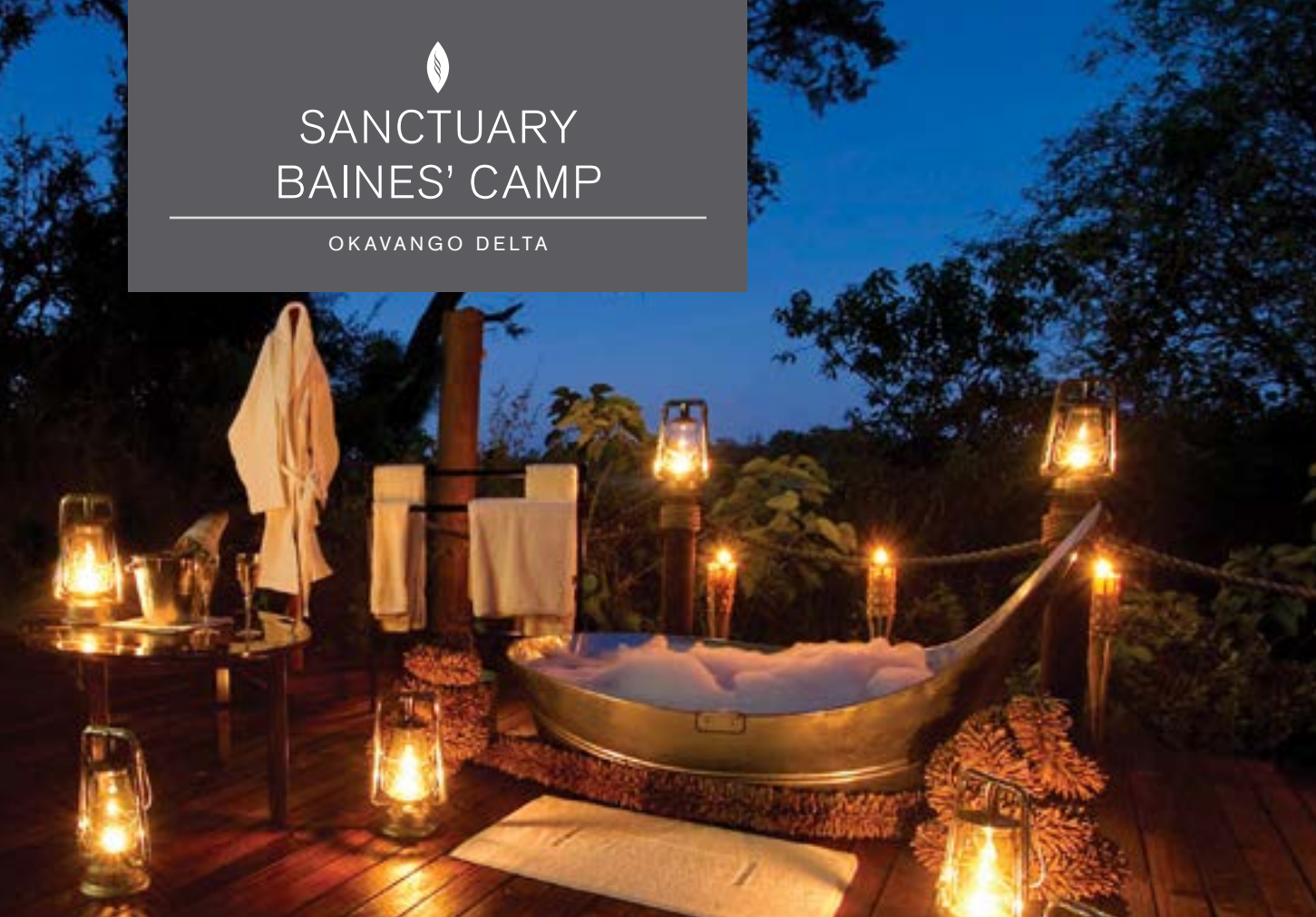
# BOTSWANA

A pristine landlocked wilderness, vast and untamed, Botswana offers unparalleled game viewing and an extremely varied safari experience across its broad, flat and open expanses of savannah, desert, saltpan and wetland. The latter makes up the Okavango Delta, the largest inland delta in the world. Every year, the Kavango River, swollen by the summer rain coming off the Angolan highlands, empties into the sand-filled basin of the northern Kalahari creating a miraculously fertile flood plain – a heaven of crystal-clear lagoons and reed-fringed channels that support rich and colourful wildlife.



# SANCTUARY BAINES' CAMP

OKAVANGO DELTA



Sanctuary Baines' Camp is our smallest and most intimate camp, built on raised platforms high above the Boro River in a huge private concession bordering the Moremi Game Reserve. There are only five suites in this romantic oasis. Each suite has a four-poster 'sky bed', swathed in mosquito netting, which can be wheeled out onto the private wooden deck for a romantic night under the stars – and we can also arrange for a private 'star bath' to be set up on your deck too. In the communal areas, there's a delightful swimming pool and on clear days the sitting room opens to the big skies of the delta.

Surrounded by water, the peculiarly opalescent quality of light is a photographer's dream, as is the varied wildlife that can be explored in a variety of ways – in 4x4, on foot, or by boat. There's also a chance to get up close and personal and interact with a trio of elephants on our unique 'Living with Elephants' experience.

#### ACCOMMODATION

A total of 5 suites

#### CHILDREN

Children aged 6 and over are welcome

#### ACTIVITIES

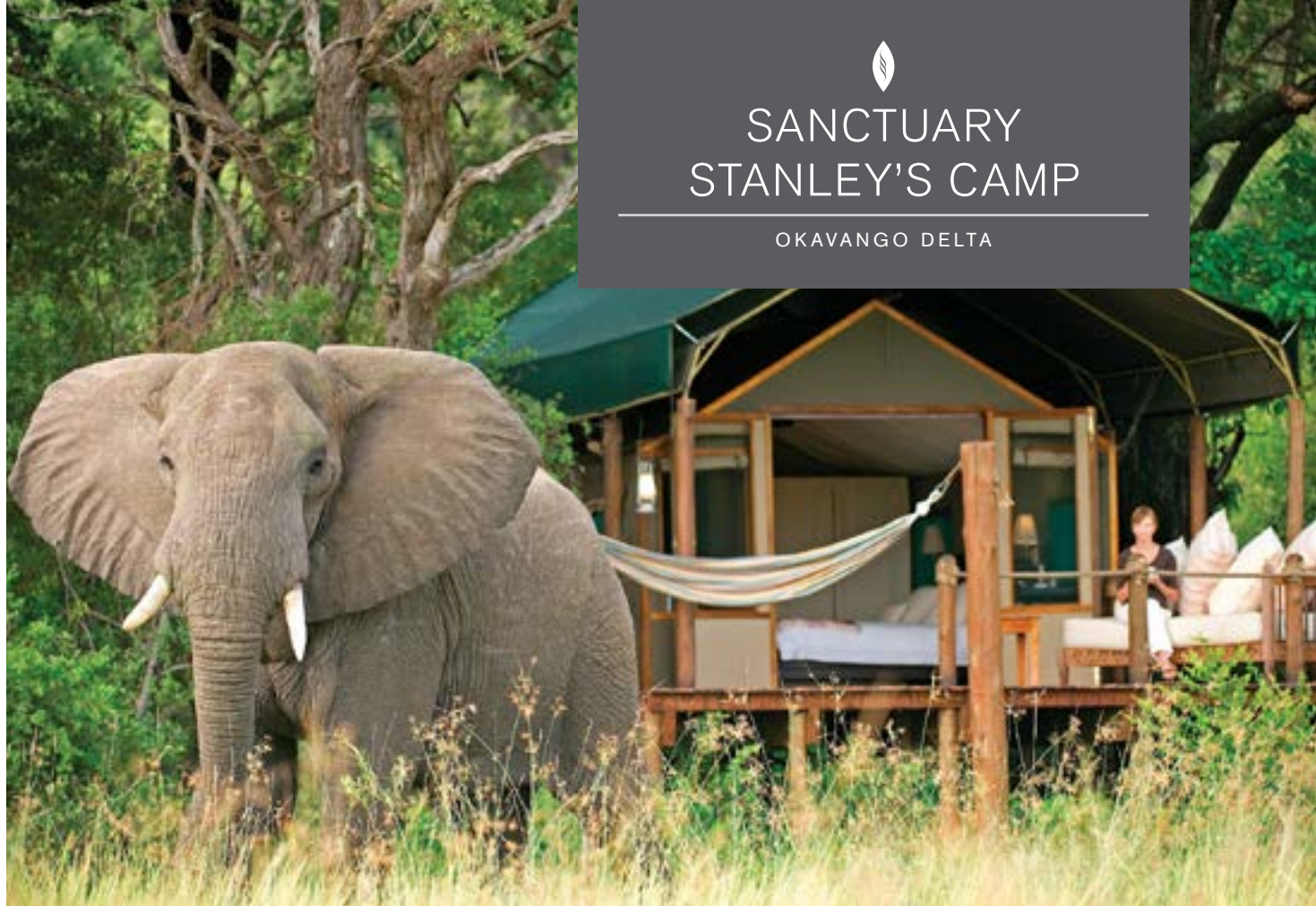
Game drives, guided walks, mokoro canoe excursions and boat trips (seasonal), scenic flights (additional), Living with Elephants interaction (additional)

#### KEY WILDLIFE

Lion, leopard, elephant, buffalo, cheetah, giraffe, impala, zebra, wild dog, hyena, and hippo







SANCTUARY  
STANLEY'S CAMP

OKAVANGO DELTA



Experience a safari in style that takes you back to the era of 19th century explorers. Set amid ebony and sausage trees on a 260,000-acre private concession within the Okavango Delta, eight classic canvas tents look out over the floodplains and are furnished with elegant African antiques.

Sanctuary Stanley's Camp is the home of our unique elephant interaction activity in partnership with the 'Living with Elephants' foundation. Explore Africa on foot from an elephant's perspective as you observe and interact with our three orphaned elephants, before enjoying a picnic lunch in their company. Game drives, including night drives, and walking safaris are also possible here: setting out across the famous delta with its extraordinary concentration of wildlife and vast congregations of elephant and buffalo offers frequent sightings of big cat predators and the endangered wild dog. This is the perfect place to kick back and go with the flow on a traditional mokoro canoe, and glide through a waterlogged universe of reeds, water lilies, and fish eagles.

**ACCOMMODATION**  
A total of 8 luxury tents

**ACTIVITIES**  
Game drives, guided walks, mokoro canoe excursions (seasonal), scenic flights (additional), Living with Elephants interaction (additional)

**KEY WILDLIFE**  
Lion, leopard, elephant, buffalo, cheetah, giraffe, impala, zebra, wild dog, hyena, and hippo



# SANCTUARY CHIEF'S CAMP

OKAVANGO DELTA



Sanctuary Chief's Camp is located in the exclusive Mombo Concession in the Moremi Game Reserve on Chief's Island, one of the many islands created by the seasonal floodwaters of the Okavango Delta. The Moremi is known as the 'predator capital of Africa' and is also home to huge herds of elephant and buffalo. There are also healthy populations of wild dog, the most endangered predator in Southern Africa.

The 12 luxurious guest pavilions all have their own decks as well as indoor and outdoor showers. The communal decked pavilion has stunning views over the floodplains, while the dining area surrounds a fire pit on the very edge of the Pajio plains. It would be a shame, however, not to venture away from this multi award-winning hideaway, either in a 4x4, or by taking a serene mokoro canoe excursion along the narrow delta channels.

#### ACCOMMODATION

A total of 12 bush pavilions

#### CHILDREN

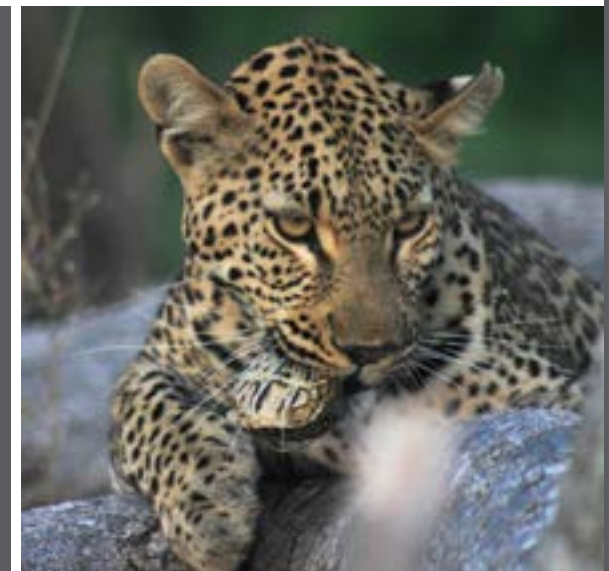
Children aged 6 and over are welcome

#### ACTIVITIES

Game drives, mokoro canoe excursions (seasonal), scenic flights (additional)

#### KEY WILDLIFE

Lion, leopard, elephant, buffalo, cheetah, giraffe, impala, zebra, wild dog, hyena, and hippo





  
SANCTUARY  
CHOBE CHILWERO

CHOBE NATIONAL PARK

This luxurious lodge is located on the edge of Chobe National Park, in and around which live the largest remaining population of elephants in the world. With just 15 thatched cottages, Sanctuary Chobe Chilwero also boasts the first full-service tree-house spa on the Botswana safari circuit. Get pampered with an Africology massage and a cocoa butter scrub after a morning game drive. Each cottage has an indoor and outdoor shower, as well as a private garden where a candlelit dinner can be served under the African sky.

For children, Sanctuary Chobe Chilwero offers an incredible introduction to the world of safari with game drives in specially modified safari vehicles. Experience our new photographic safari boat with 360° rotating seats to capture the perfect shot at all angles. Relax in the inviting split-level swimming pool – a great place to finish a safari, or enjoy the array of gourmet food and wines, for which the lodge has become renowned.

**ACCOMMODATION**

A total of 15 thatched cottages including 1 honeymoon suite with plunge pool

**ACTIVITIES**

Game drives, boat cruises, scenic flights (additional), day trips to Victoria Falls (additional), tiger fishing (additional)

**KEY WILDLIFE**

Elephant, buffalo, lion, leopard, giraffe, impala, waterbuck, zebra, and hyena



*Kingly*

# KENYA

Immense skies and distant horizons, vibrant tribes and their rich cultural heritage, rolling savannah, shimmering desert and big-game wildlife, Kenya has no match. The annual wildebeest migration passes through the southern region, and in the arid north there are walking, horse- or even camel-riding safaris to be experienced. Landscapes range from the snowcapped peaks of Mount Kenya to the flamingo-ringed soda lakes and, of course, there's the promise of the Indian Ocean coast – mile upon mile of white-sand beaches and excellent deep sea fishing.



# SANCTUARY OLONANA

MASAI MARA

Overlooking the Mara River, award-winning Sanctuary Olonana, our first ever luxury safari property, is the idyllic location to experience a classic and authentic African safari.

From the chef's organic garden, to the use of sustainable energy sources, Sanctuary Olonana sets a new standard with its light environmental 'footprint'. Over the years Sanctuary Olonana has also built strong relationships with the local Maasai tribes by working with them to improve their level of health-education and lifestyle, and securing unrivalled access to their culture and local knowledge.

This luxury safari camp is an exclusive hideaway complete with library, swimming pool, and the freedom to enjoy a three course dinner deep in the bush or on the private river-view terrace of one of the 14 luxurious canvas pavilions. For wildlife lovers, this is one of the best places in East Africa to witness the spectacle that is the wildebeest migration. Whether on foot or from the back of a 4x4, here, at the heart of Africa's big game country, the thrill of a traditional safari will never disappoint.

## ACCOMMODATION

A total of 14 luxury tents

## ACTIVITIES

Game drives, guided walks, Maasai village visits, hot air balloon safari (additional), scenic flights (additional), excursions to Lake Victoria (additional)

## KEY WILDLIFE

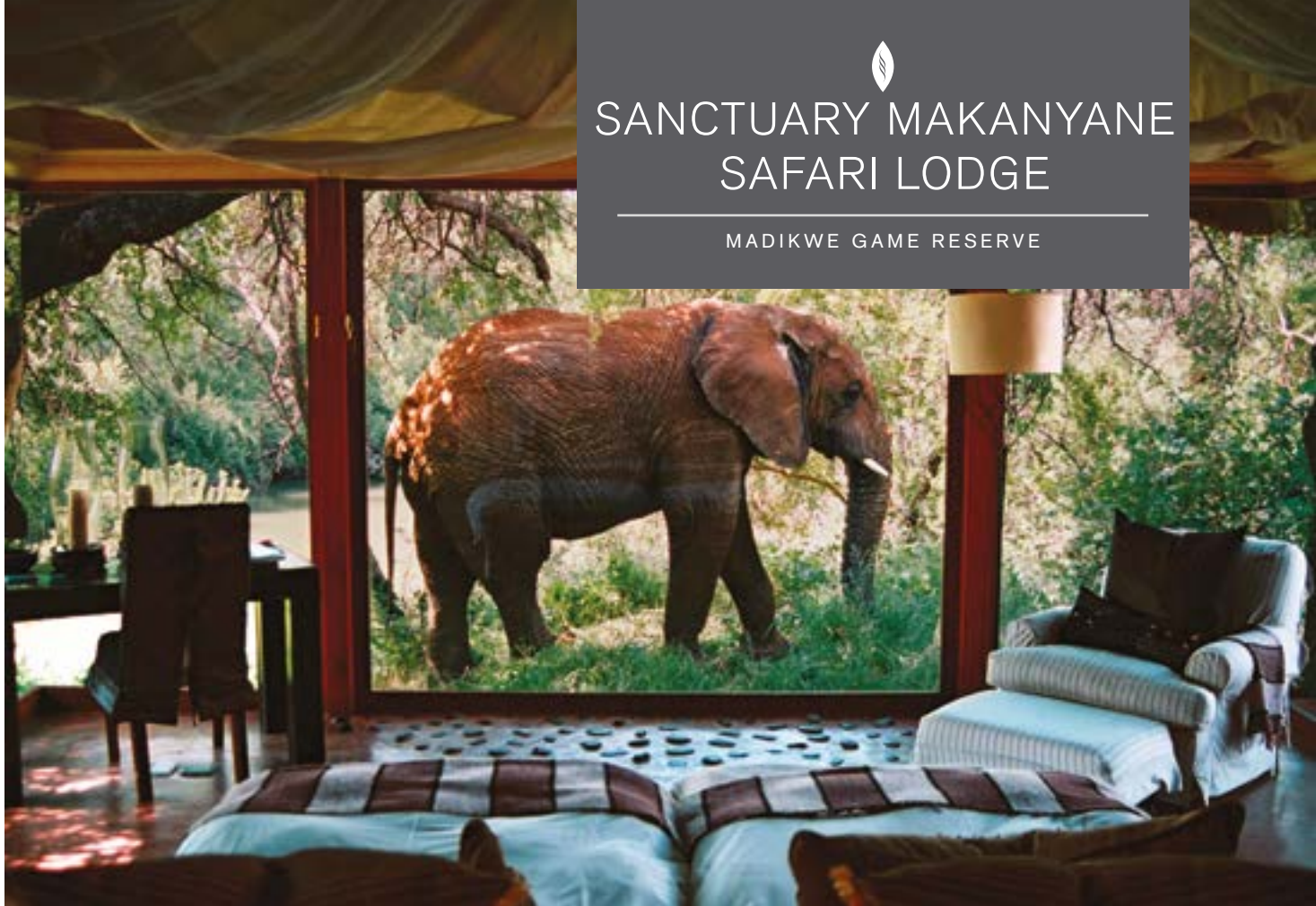
Lion, leopard, elephant, buffalo, cheetah, wildebeest, giraffe, impala, zebra, and hippo



*Sun-soaked*

# SOUTH AFRICA

South Africa is a land of adventure, teeming with a kaleidoscope of exciting wildlife, cultures and natural beauty. Whether you are a safari virgin hoping to catch your first glimpse of the Big Five or a safari aficionado with a specific sighting in mind, South Africa will rarely disappoint. As a world leader in responsible tourism, it has some of the best game-viewing destinations in the world and is home to the Big Five, elusive African wild dog, cheetah, giraffe, and rhino as well as a host of other game species. From the world-famous Kruger Park to the relatively unknown but magnificent malaria-free Madikwe Reserve, South Africa offers visitors rich diversity and exceptional animal sightings.



  
**SANCTUARY MAKANYANE**  
**SAFARI LODGE**

MADIKWE GAME RESERVE

Sanctuary Makanyane Safari lodge is situated on 1,800 hectares of private ground within one of South Africa's best kept secrets, the malaria-free Madikwe Game Reserve. Home to the Big Five, this is one of the country's premier game-viewing destinations, not to mention one of the best areas in Southern Africa to see the elusive wild dog. Despite this, the reserve remains largely unknown and therefore free from the throngs of visitors found in some of South Africa's more famous parks.

The eight luxurious suites which make up the lodge are exquisitely secluded in lush forest overlooking the Marico River. Each suite has spectacular glass-walled bedrooms, offering uninterrupted views of the surrounding forest and the river, allowing guests to continuously experience the natural beauty of their surroundings. There is a spa offering massage and aromatherapy, an award-winning cellar, an air conditioned gym and a swimming pool. Guests also have the option to sleep under the stars surrounded only by the African wilderness at the lodge's raised 'Star View Sleep-Out Hide'.

**ACCOMMODATION**

A total of 8 suites

**CHILDREN**

Children aged 12 and over are welcome

**ACTIVITIES**

Game drives, game walks, bird watching, local village tour (additional), Botswana "Lady Detective" cultural tour (additional), Gaborone City tour (additional)

**KEY WILDLIFE**

Lion, elephant, buffalo, rhino, leopard, wild dog, giraffe, cheetah, hyena and 360 bird species



*Timeless*

# TANZANIA

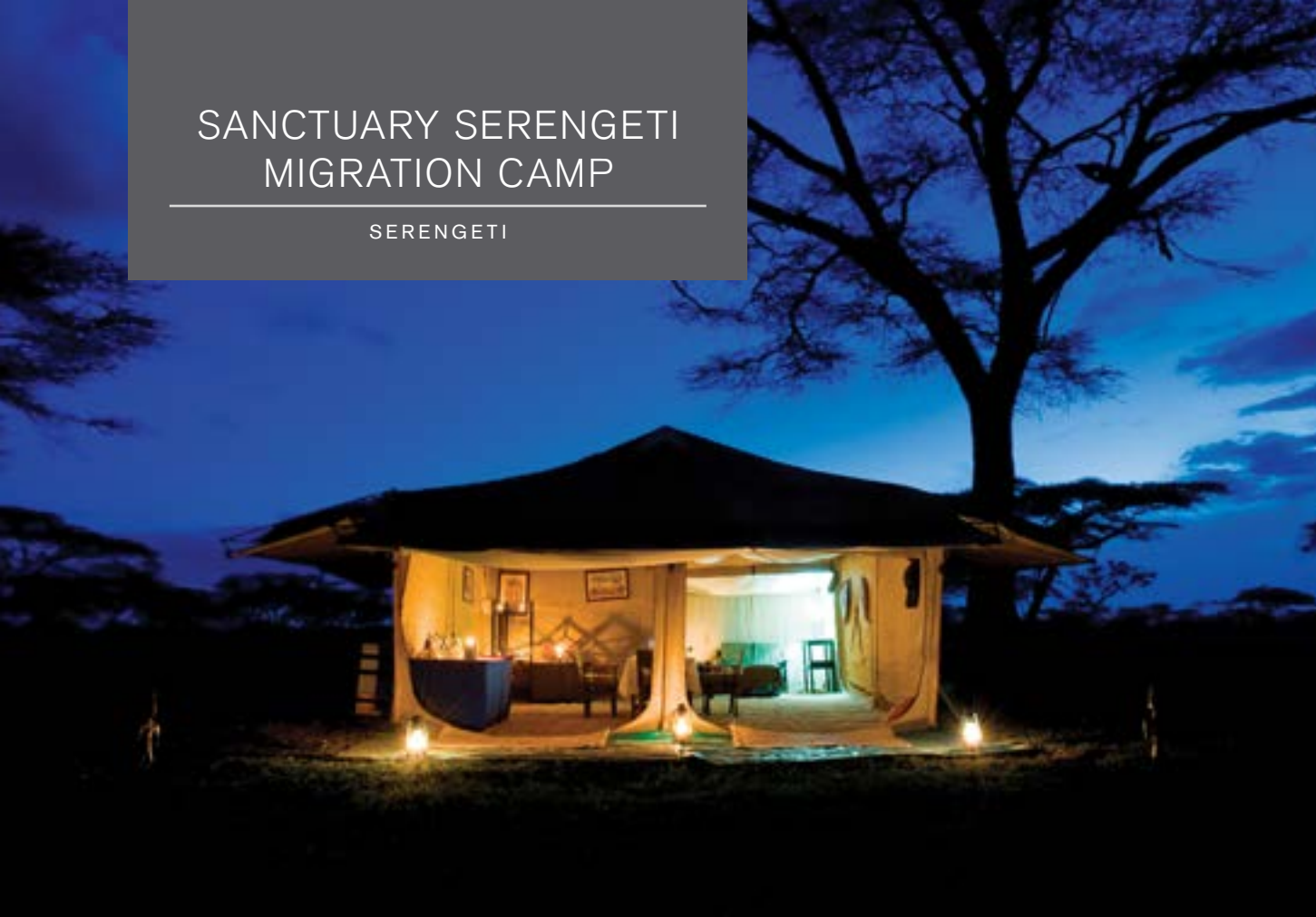
Tanzania is the safari connoisseur's destination of choice. Here, the sweeping plains of East Africa – with their fertile soil and flat-topped acacias – meet the woodlands of south-central Africa. This is a vast country, with one of the largest wildlife herds on the continent; an incredible array of national parks and game reserves; countless tribal groups; and the island of Zanzibar for post-safari wind-down. The topography is on an epic scale – the snows of Kilimanjaro; the lush Ngorongoro Crater highlands; and the awesome expanse of the Serengeti. Our intimate camps are your front-row seat to Tanzania's wildlife extravaganza, and we are proud to announce that we can now offer year-round migration watching in rather special accommodation.





# SANCTUARY SERENGETI MIGRATION CAMP

SERENGETI



Sanctuary Serengeti Migration Camp is our new travelling camp. Created to follow the migration all year round, it moves from its springtime location in the Western Serengeti (April-July) to the Northern Serengeti (August-November) and the Southern Serengeti (December-March) each year, depending on actual migration movements. With just ten luxury safari tents you will have the privilege to feel closer than ever to the action and live among the migration – as it happens. Join six million hooves crossing the open plains, with more than 200,000 zebras, 300,000 Thomson’s gazelles and over a million wildebeests as they trek for fresh grazing.

Each tent has its own ensuite bathroom with indoor bucket shower, giving a luxurious take on safari camping. Three communal tents provide areas for dining, a lounge, and a sundowner bar, but individual dining locations and sofa spots can also be set up around the camp to afford unique viewpoints. Game drives in and around the migration will no doubt be the highlight of any tour, together with our very special take on the bush ‘picnic’.

#### ACCOMMODATION

A total of 10 private tents and 3 communal tents

#### CHILDREN

Children aged 6 and over are welcome

#### ACTIVITIES

Game drives following the migration, bush picnics

#### KEY WILDLIFE

Lion, buffalo, elephant, leopard, wildebeest, and zebra





  
**SANCTUARY KUSINI**  
 SOUTHERN SERENGETI

In the Masai language *Serengeti* means ‘endless plains’. Every year, this wonderful land plays host to one of the largest and longest overland migrations on the face of the Earth. Around October, nearly two million wildebeest and zebra travel from the northern hills toward the southern plains, crossing the Mara River, in pursuit of the rains – a distance of about 500 miles. In April, they return.

Set on a rocky outcrop, or kopje, Sanctuary Kusini is a semi-permanent tented camp in the vast southern Serengeti. Each of the 12 tents, all with secluded private showers and terraces, overlook the plains where zebras, cape buffalos, wildebeests, lions and leopards are a common sight all year round. Relax in the communal tent with its own library, sitting room and veranda. Bush sundowner cocktails are served on the giant boulders of the kopje. Our local guides know the wildlife and the people of this region well; ultimately, it is their knowledge and experience that makes this Serengeti experience absolutely unforgettable.

**ACCOMMODATION**

A total of 12 luxury tents

**CHILDREN**

Children aged 6 and over are welcome

**ACTIVITIES**

Game drives, cosmic safaris, bush picnics, hot air balloon safari (additional), sundowners on the kopje

**KEY WILDLIFE**

Lion, leopard, elephant, buffalo, cheetah, wildebeest, giraffe, impala, zebra, and hyena



# SANCTUARY SAADANI SAFARI LODGE

SAADANI NATIONAL PARK



Siri Honeymoon Suite



Safari and beach, what more could you wish for? Superbly situated within the Saadani National Park – the only Park with a coastline on the Indian Ocean, Sanctuary Saadani Safari Lodge offers a unique combination of traditional safari and the beautiful untamed African coast. The lodge provides an intimate and well-appointed selection of suites, all with direct access to the sandy beaches. The Siri Suite, (*siri* meaning secret in Swahili), is ideal for honeymooners providing extra privacy, a private swimming pool, outdoor shower, and its very own sundowner deck, bar, and dining area.

Away from the beach, the lodge offers exhilarating game drives in customised open 4x4s and boat trips along the Wami River to see hippos, crocodiles, colobus monkeys and birds galore. The Indian Ocean setting is idyllic for evening cocktails followed by a barbecue of freshly caught prawns and seafood enjoyed in the thatched beach restaurant.

#### ACCOMMODATION

A total of 15 suites including 9 Banda Suites, 5 Maridadi Suites, 1 Siri Suite

#### ACTIVITIES

Sandbank picnic, snorkelling, game drives, walking safari, Masai village visit, river safaris, bird watching, bush meals, sundowners

#### KEY WILDLIFE

Lion, giraffe, elephant, and buffalo





  
**SANCTUARY SAADANI**  
**RIVER LODGE**

WAMI RIVER, SAADANI

Sanctuary Saadani River Lodge, built for rest and relaxation on the shore of the Wami River, with its resident hippos, is the epitome of 'Luxury, naturally'. This spacious and superior river retreat is set in the trees of a mangrove forest near the savannah, with an abundance of wildlife close to hand. Guided game drives head out within the Saadani National Park to catch the best of the action from lions, leopards, and elephants. River views and special excursions present plenty of opportunities to spot hippos, crocodiles and an array of birdlife in total comfort.

The lodge has 17 individual, stilted suites and one private villa, the Wami Suite, ideal for families. All suites have ensuite bathrooms with the river as their backdrop, as well as private balconies, and are connected across the camp by stilted walkways. The lodge's in-house spa offers a wide selection of treatments. Alternatively you can also choose to unwind by the stunning infinity pool or enjoy a sundowner in one of our many favourite nearby view points. Pure bliss.

**ACCOMMODATION**

A total of 18 suites including 1 private villa

**CHILDREN**

Children aged 6 and over are welcome

**ACTIVITIES**

Sandbank picnic, snorkelling, game drives, walking safari, Masai village visit, river safaris, bird watching, bush meals, sundowners

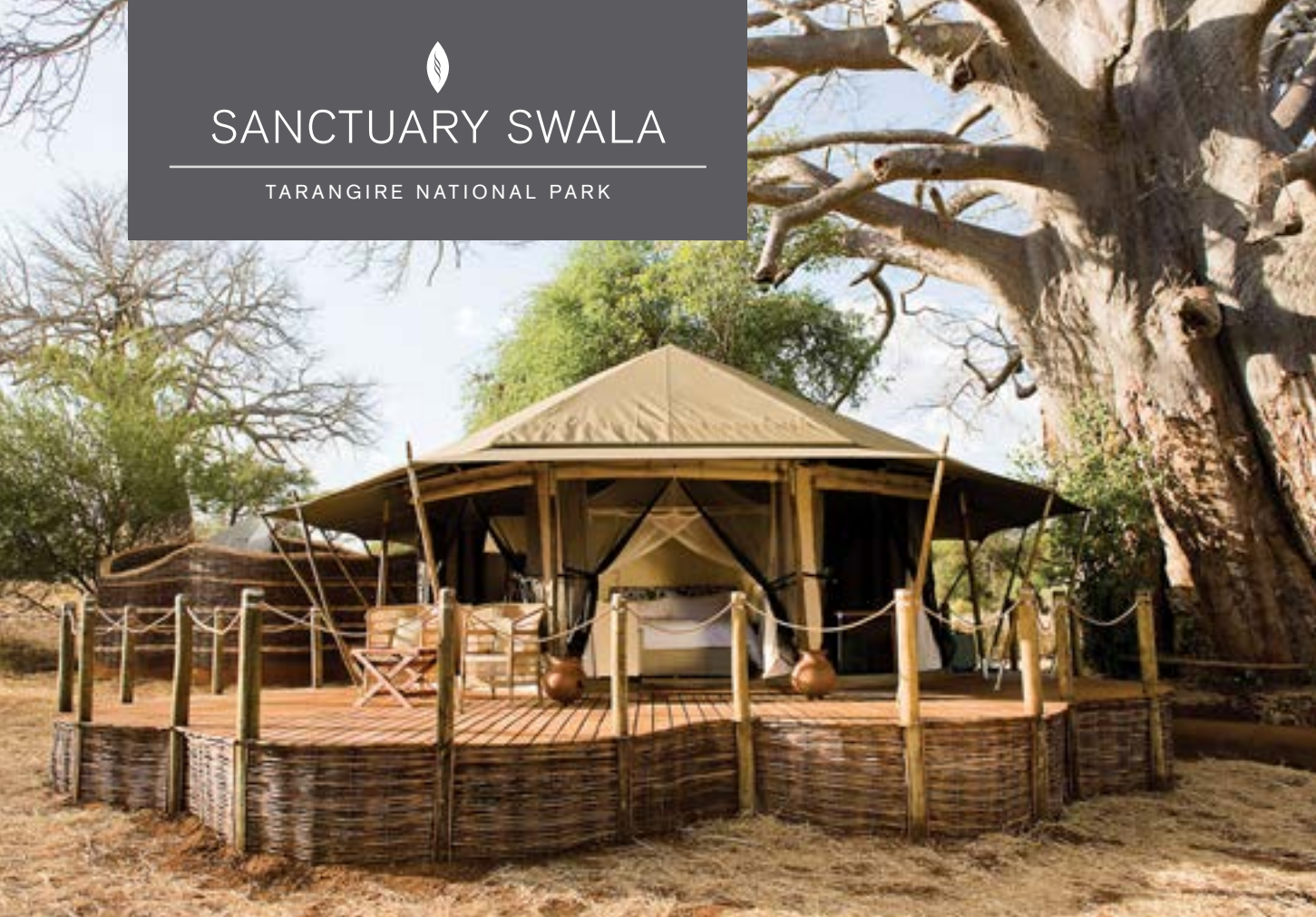
**KEY WILDLIFE**

Hippo, crocodile, colobus monkey, and an abundance of birds



# SANCTUARY SWALA

TARANGIRE NATIONAL PARK



The only camp in this remote corner of the Tarangire National Park – one of the most exciting yet least visited parks in Tanzania – Sanctuary Swala offers total seclusion in a shady copse of giant acacia trees, looking out to the flat savannah beyond. The picturesque landscape is filled with ancient baobabs, passing elephants, and birds in flight – the classic safari-scape of your imagination. *Swala* is Swahili for impala, which are plentiful in these parts, as are kudu, giraffes, buffalos, lions, cheetahs and leopards.

Twelve luxurious canvas pavilions surround the main dining and lounge areas. Each tent has its own personal attendant to cater to your every need, including serving cocktails on your private veranda. The pavilions are open plan, with both indoor and outdoor showers. The peaceful common areas are lifted on stilts, and decorated in a contemporary African style. But the star attraction must be the waterhole a few hundred yards from the dining tent – and within sight of your private terrace. Waterbucks, lions, the odd leopard, and numerous elephants regularly drop in for a quick drink. Join them with a sundowner.

#### ACCOMMODATION

A total of 12 luxury tents

#### CHILDREN

Children aged 6 and over are welcome

#### ACTIVITIES

Game drives, philanthropic visits, guided walks (additional), night drives (additional), hot air balloon safari (additional)

#### KEY WILDLIFE

Lion, leopard, elephant, buffalo, cheetah, giraffe, impala, kudu, zebra, hippo, and hyena





  
**SANCTUARY**  
**NGORONGORO CRATER CAMP**  


---

 NGORONGORO CONSERVATION AREA

Sixteen kilometres in diameter, the Ngorongoro Crater is surely the eighth wonder of the natural world. Evidence suggests man has walked this area for over three million years. Today, the dramatic backdrop, together with the wealth and variety of its wildlife – some 25,000 animals – makes the crater one of the most thrilling locations to camp in.

Our new year-round Sanctuary Ngorongoro Crater Camp is perched on the rim of this amazing spectacle. The camp comprises just ten luxury safari tents, all with ensuite bathrooms with indoor bucket showers, king-size beds, and everything that makes a Sanctuary camp an authentic safari experience. Three communal tents provide a dining area, lounge, and lounge bar with breathtaking views of the surrounding nature. For a more intimate experience you can choose to dine on individual tables set around the camp. Game drives can be arranged to explore the rim and the crater itself. All in all, breath-taking.

**ACCOMMODATION**

A total of 10 luxury tents and 3 communal tents

**CHILDREN**

Children aged 6 and over are welcome

**ACTIVITIES**

Game drives in Ngorongoro crater and on the rim

**KEY WILDLIFE**

Lion, hippo, wildebeest, zebra, wild dog, leopard, cheetah, crocodile, and flamingo



*Unique*

# UGANDA

Uganda is often eulogised as the undiscovered pearl of Africa. A luxuriant landscape spoils you with the highest mountains, the thickest rainforests, the deepest lake and wildest white water – all contained and accessible within a relatively compact area. Boasting over 1,000 species of birds, and wildlife not found anywhere else, it is the original Eden, and home to the world's greatest concentration of primates – which can still be encountered at close quarters in their natural habitat. Uganda affords the curious and energetic traveller a chance to enjoy a more adventurous level of safari.





# SANCTUARY GORILLA FOREST CAMP

BWINDI IMPENETRABLE FOREST

Idyllically located in a glade facing mist-shrouded primeval rainforest in the far southwestern corner of Uganda, Sanctuary Gorilla Forest Camp is one of the most remote and atmospheric camps in Africa. A World Heritage site, Bwindi Impenetrable Forest is an area of awe-inspiring bio-diversity with over 200 species of birds, butterflies and trees.

Adventurous travellers come for once-in-a-lifetime encounters with the elusive endangered Mountain Gorilla. Half of the world's population of these incredible animals lives here amongst the mossy undergrowth of the forest floor. A reasonable level of fitness is necessary for the days spent negotiating the steep and slippery terrain that soars up to 2,000 metres above sea level. Even travellers with walking difficulties can still enjoy this amazing experience thanks to our porters and sedan chair. Following a day of strong emotions, unwind with a hot bath to ease tired muscles or at the spa, and get ready to taste an inviting menu of true comfort food. Sanctuary Gorilla Forest Camp offers an authentic and welcoming atmosphere with its eight stylish and spacious tents; deep tubs; soft linen; cosy candlelight ambients and inspiring campfires.

#### ACCOMMODATION

A total of 8 tents

#### CHILDREN

All ages are welcome. Children must be over 15 for tracking gorillas

#### ACTIVITIES

Community interaction and village visit, forest walk, gorilla tracking (additional), birding walk (additional)

#### KEY WILDLIFE

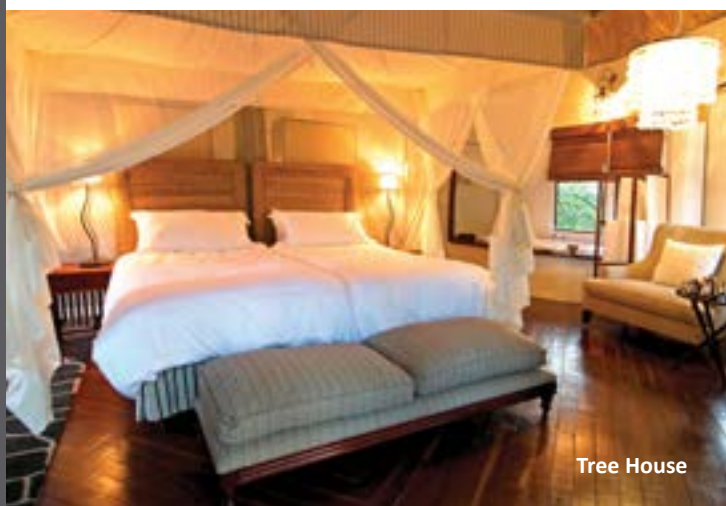
Mountain gorilla, baboon, L'Hoest monkey, giant forest hog, and civet



*Zealous*

# ZAMBIA

Rich in wildlife and still unspoilt, Zambia is less established as a holiday destination than many of its neighbours, making it one of the best places to have an authentic safari experience. The country has some of Africa's best wildlife parks (19 in total) and is home to the mighty Zambezi River and the largest waterfall in the world, the Victoria Falls. Fishing enthusiasts come to Zambia for its famously exotic fish, while bird-watchers are drawn by its diverse birdlife. Sanctuary Retreats' lodges and camps take you to the heart of Zambia, from the iconic Victoria Falls to the game-rich valleys of the South Luangwa, with the privilege of experiencing this unique country in authentic style.

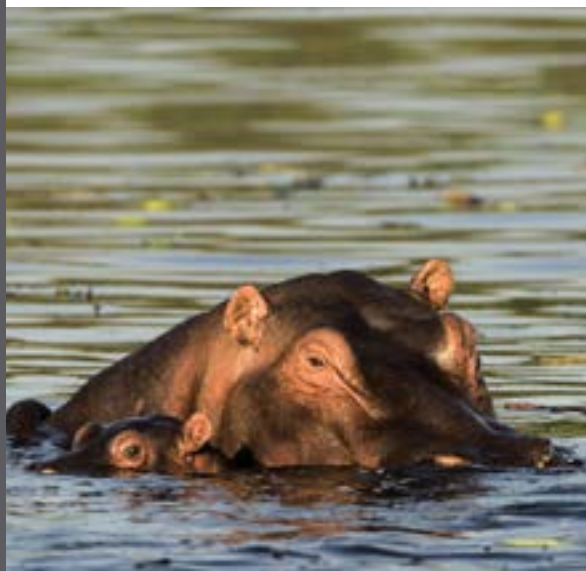


Tree House



# SANCTUARY SUSSI AND CHUMA

VICTORIA FALLS



Zambia’s breath-taking Victoria Falls often move people to heightened emotional states. They inspired the Victorian explorer Livingstone to remark: ‘Scenes so lovely must have been gazed upon by angels in flight.’ These days, you don’t need to have wings to gaze in wonder at the Falls’ power and might from above, we will be arranging your helicopter or light aircraft experience. Livingstone’s two faithful Zambian retainers, Sussi and Chuma, were always by his side – and it is after them that this luxurious haven in the heart of Mosi-oa-Tunya National Park is named.

The main lodge comprises 12 heavenly tree houses connected by wooden walkways and perched in giant ebony trees overlooking a particularly racy bend in the Zambezi River. There are also two private houses, each with two bedrooms, their own dining areas and decks with plunge pools, as well as a private chef and dedicated staff. At Sanctuary Sussi and Chuma, expect a superb wine cellar and an elevated bar with mind-blowing views across the Zambezi. For more tranquil excursions you can opt to take river trips, gliding silently past basking crocodiles and pods of dozing hippo, whilst thrill-seekers can choose white-water rafting, bungee jumping, and heli-flipping at the Falls.

#### ACCOMMODATION

A total of 12 tree houses and 2 Chuma private houses

#### CHILDREN

Children aged 6 and over are welcome in the main lodge, all ages are welcome in Chuma houses

#### ACTIVITIES

Tour of the Falls (Zimbabwean side additional), game drives, sundowner cruises, Nakatindi village tours, walking safaris, fishing, and adrenalin activities (additional)

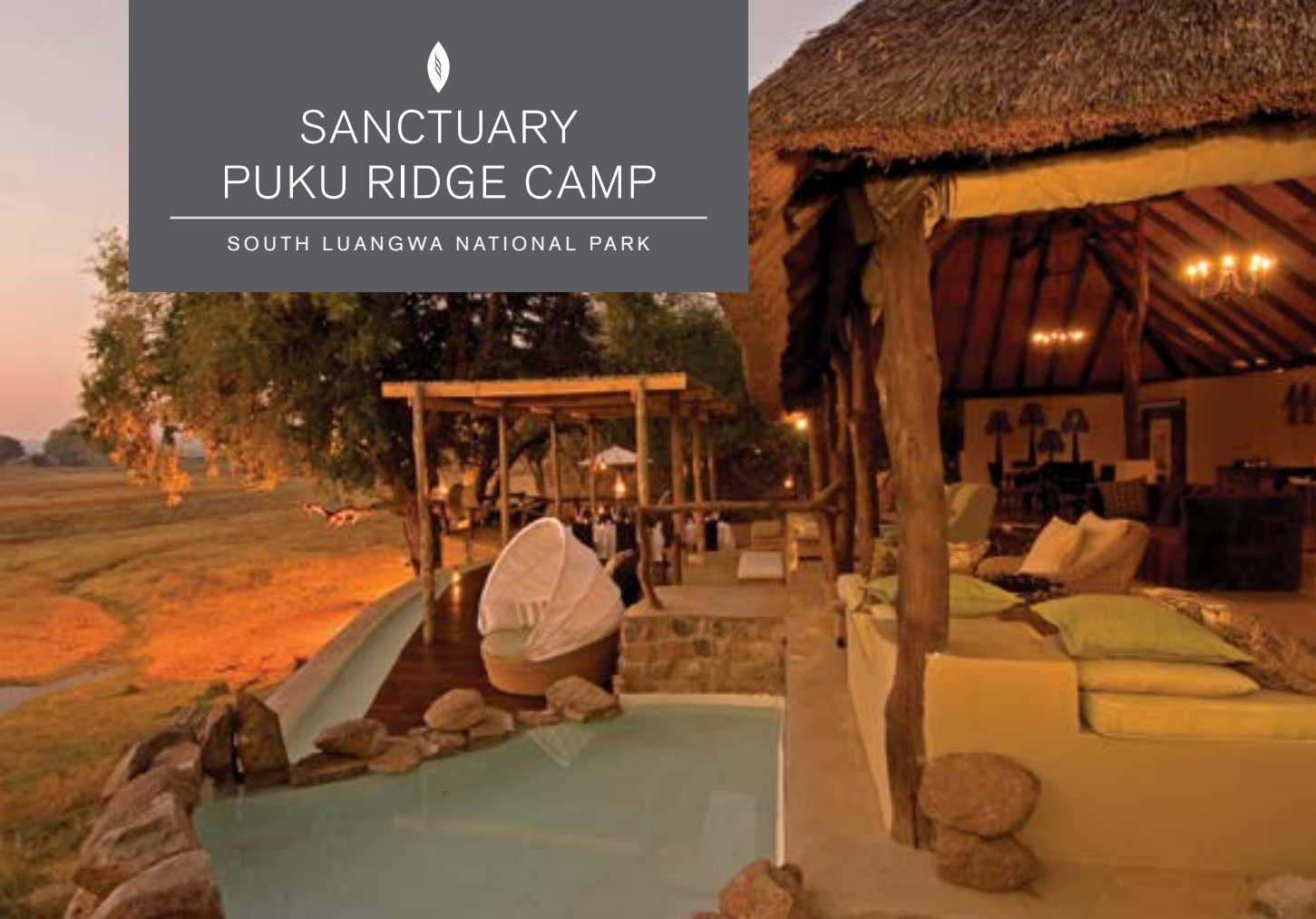
#### KEY WILDLIFE

Elephant, buffalo, zebra, giraffe, crocodile, hippo, and baboon



# SANCTUARY PUKU RIDGE CAMP

SOUTH LUANGWA NATIONAL PARK



Sanctuary Puku Ridge Camp, named after the Puku antelope that graze the floodplains in its vicinity, is perched high on an escarpment in a remote part of the South Luangwa. The camp has embraced a very natural African chic style in its decoration, blending in completely with its local environment. This is a classic, traditional tented bush camp, intimate and friendly with just seven tents, offering the authentic safari experience that many people long for. Overlooking the beautiful floodplains below, the tents are spacious and comfortable, with private decked balconies and secluded outdoor showers stocked with luscious and environmentally friendly products.

The region is abundant with elephants, lions, wild dogs, buffalos, hippos, wildebeests and antelopes – many of which will be easily spotted as you lounge on your balcony or eat dinner. This stunning park can also be explored on foot with park rangers and tracking guides, offering a chance to see some of the more elusive animals, such as leopards, the genet cats, and honey badgers. Sunset is a perfect time to enjoy a cocktail in the bush, or on the banks of the Luangwa River watching a hippo swimming party.

**ACCOMMODATION**  
A total of 7 luxury tents

**CHILDREN**  
Children aged 6  
and over are welcome

**ACTIVITIES**  
Game drives, walking safaris

**KEY WILDLIFE**  
Lion, leopard, elephant, buffalo,  
wild dog, giraffe, impala, puku,  
kudu, zebra, hippo, hyena,  
and endemic species





  
**SANCTUARY CHICHELE  
 PRESIDENTIAL LODGE**

SOUTH LUANGWA NATIONAL PARK

This impressive, historic lodge has the cachet of having once been the private bush retreat of the first Zambian president, Kenneth Kaunda. Sanctuary Chichele Presidential Lodge features a proud, arched entrance, a huge colonial-style lounge, and its wow-factor hilltop position and panoramic terrace provide breath-taking views across the game-filled valleys of the South Luangwa National Park.

The ten rooms, all with french windows, open onto private terraces overlooking the valley. The Luangwa River supports a variety of habitats, and this is prime game-viewing territory especially for spotting the charismatic leopards. Experience the excitement of game drives as well as the chance to explore on foot. This corner of Zambia is where the walking safari tradition started, so you must take a deep breath and step out into the bush. Professional guides and rangers will help you get up close and personal with the natural world on show here. Walking is the best way to spot the 'Little 5' – the buffalo weaver, elephant shrew, leopard tortoise, ant lion and rhino beetle.

**ACCOMMODATION**  
 A total of 10 suites

**ACTIVITIES**  
 Game drives, walking safaris

**KEY WILDLIFE**  
 Lion, leopard, elephant, buffalo, wild dog, giraffe, impala, puku, kudu, zebra, hippo, hyena, and endemic species

**Your 'Luxury, naturally' experience awaits and our specialists are at your disposal to create your bespoke journey.**

For more information please contact your local wholesaler or our Sanctuary Retreats reservation centre in your destination of choice:

**South Africa, Botswana, Zambia:**

+ (27) 11 438 4650

reservations.safrica@sanctuaryretreats.com

**Tanzania:**

+ (255) 27 250 9817

reservations.tanzania@sanctuaryretreats.com

**Kenya & Uganda:**

+254 (0)20 248 7374

reservations.kenya@sanctuaryretreats.com

**Egypt:**

+ (202) 23 947 820

reservations.egypt@sanctuaryretreats.com

**China:**

+ (852) 3179 5900

reservations.asia@sanctuaryretreats.com

**Myanmar:**

+ (44) 20 7004 2345

reservations.myanmar@sanctuaryretreats.com

[www.sanctuaryretreats.com](http://www.sanctuaryretreats.com)







SANCTUARY  
RETREATS